





Social Lobby



Social Lobby



Bluebell Garden



PROXIMITY[®] HOTEL

- Sustainable practices, custom-designed furnishings, commissioned art and innovative design fill our AAA Four Diamond hotel. Events in our elegant spaces feature specially designed menus for any occasion, whether you have 5 or 450 guests. Personalized events are our specialty and our planning professionals help you with all the details.
- Four event rooms total 7,300 square feet of flexible space and have outside windows and abundant natural light. They are equipped with state of the art individual lighting and sound, as well as high speed internet access.
- 147 (including 10 suites) oversized guestrooms feature mindful design with huge windows, extraordinarily comfortable furnishings, 10-foot high ceilings, fresh air, Wi-Fi and glorious natural light.
- Print Works Bistro, adjacent to the hotel, uses fresh, local food in creating traditional and modern versions of classic European bistro dishes. The dining room features three walls of delightful windows and outdoor dining overlooks a 2.5-acre natural area.
- Each guestroom floor features a guest lounge “living room” with comfortable seating.
- Other hotel amenities include a 24-hour fitness center and outdoor pool.
- Proximity is only a stone’s throw away from its sister, the AAA Four Diamond O.Henry Hotel, and Friendly Shopping Center with 120+ retail stores.
- The Social Lobby creates a comfortable gathering area with a 22-foot high wall of windows overlooking the Bluebell Garden.
- Proximity Hotel is the first hotel in America to be certified LEED Platinum, the highest certification given by the USGBC Leadership in Energy and Environmental Design.





Dining



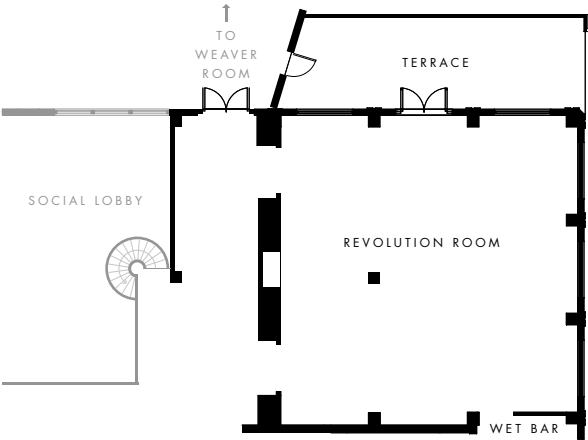
Meeting



Cocktail Lounge Reception



PROXIMITY® HOTEL



REVOLUTION ROOM

The Revolution Room opens onto its own outdoor terrace, and is surrounded by several operable 9 x 9 ft. windows, which allow natural light to permeate the space. This area accommodates up to 72 guests for a sit-down dinner and 100 for a reception.

	DIMENSIONS	SQ. FEET	CONVERTIBLE SEATING CAPACITIES					
			THEATRE	SCHOOLROOM	CONFERENCE	U-SHAPE	COCKTAIL	DINING
Revolution Room	39' x 39'	1521	100	56	22	26	100	72
Revolution Terrace	10' x 39'	390	N/A	N/A	N/A	N/A	20	16
Revolution Room + Terrace	N/A	N/A	N/A	N/A	N/A	N/A	100	N/A

CEILING: 10' – 12'





Dining



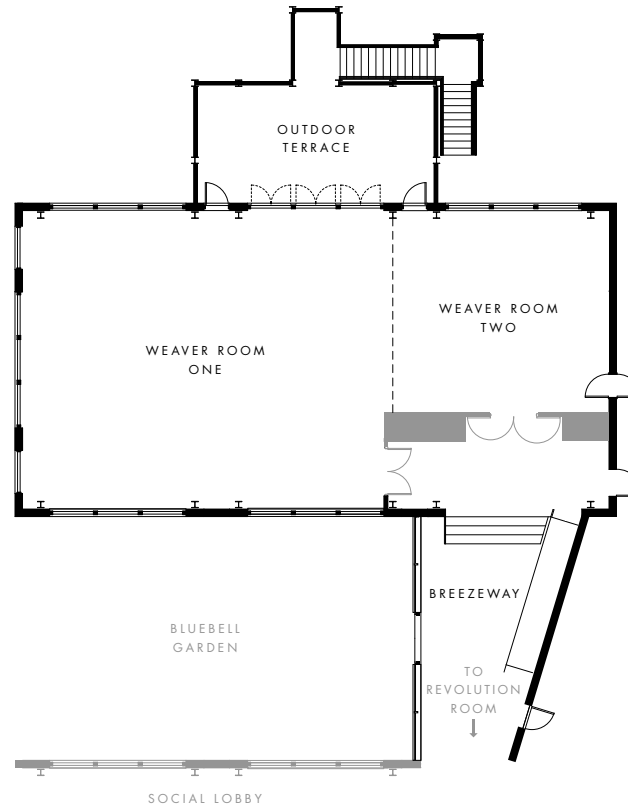
Schoolroom



Dining



PROXIMITY[®] HOTEL



WEAVER ROOM

The Weaver Room is our largest event space and can accommodate up to 200 for a reception and 156 for a sit-down dinner. It easily divides into a second smaller space. Featuring high 12-foot ceilings, floor-to-ceiling windows, and access to an outdoor terrace, it is an airy, well-lit room which offers wonderful vistas of the Bluebell Garden and 2.5 acres of natural habitat. With operable windows, an open-air venue can be created.

CEILING: 12'

	DIMENSIONS	SQ. FEET	CONVERTIBLE SEATING CAPACITIES					
			THEATRE	SCHOOLROOM	CONFERENCE	U-SHAPE	COCKTAIL	DINING
Weaver Room One	47' x 39'	1833	120	84	24	22	130	108
Weaver Room Two	29' x 19'	551	50	28	18	16	40	48
Weaver Room One + Two	77' x 39'	3003	200	120	N/A	N/A	200	156
Weaver Terrace	32' x 16'	512	N/A	N/A	N/A	N/A	25	24
Weaver Room One + Two + Terrace	NA	3515	200	N/A	N/A	N/A	200	156
Weaver Breezeway	12' x 31'6"	378	N/A	N/A	N/A	N/A	N/A	N/A





Dining



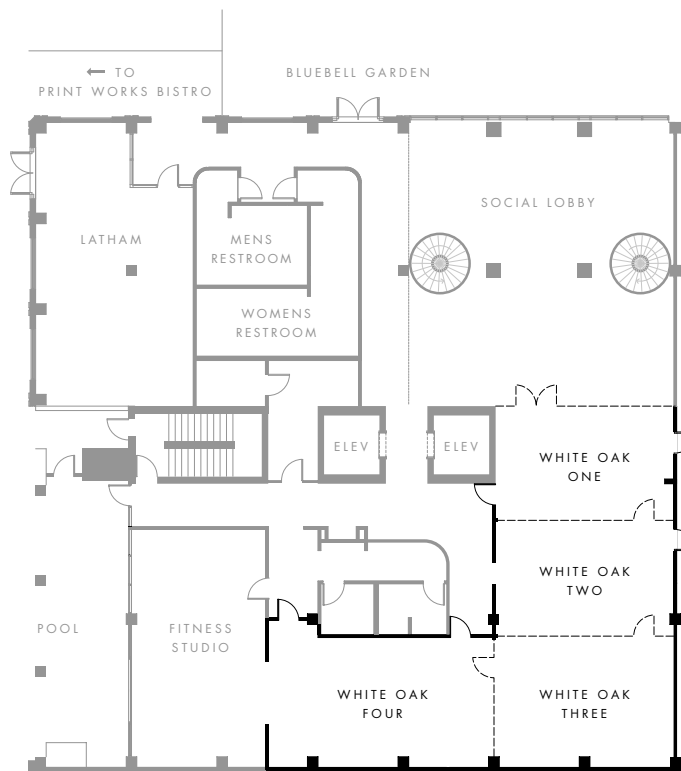
Ceremony



Schoolroom



PROXIMITY® HOTEL



WHITE OAK ROOM

The White Oak Room is our second largest event room at 1,821 square feet and accommodates up to 125 for a reception and 96 for a sit-down dinner. It opens onto the 22-foot-high Social Lobby of the hotel and can be divided into multiple configurations. A movable glass wall can separate the event space from the Social Lobby with automatic drapes that can be closed for additional privacy. A spectacular setting for a social gathering, dinner, business meeting or ceremony.

CEILING: 11'

	DIMENSIONS	SQ. FEET	CONVERTIBLE SEATING CAPACITIES					
			THEATRE	SCHOOLROOM	CONFERENCE	U-SHAPE	COCKTAIL	DINING
White Oak One	24' x 18'	432	25	12	12	10	20	24
White Oak Two	24' x 15'	360	25	12	10	10	20	16
White Oak Four	33' x 17'	561	25	18	16	18	30	32
White Oak One + Two	24' x 33'	792	50	20	22	18	40	48
White Oak Two + Three	24' x 33'	792	50	24	22	18	40	48
White Oak One + Two + Three	24' x 51'	1224	75	32	N/A	N/A	60	72
White Oak Four + Three	59' x 17'	1003	50	30	N/A	N/A	40	56
White Oak Four + Three + Two	59' x 32' (L-Shape)	1389	75	32	N/A	N/A	60	80
White Oak	59' x 51' (L-Shape)	1821	100	44	N/A	N/A	125	96
White Oak + Lobby	N/A	3721	N/A	N/A	N/A	N/A	250	200





Retreat



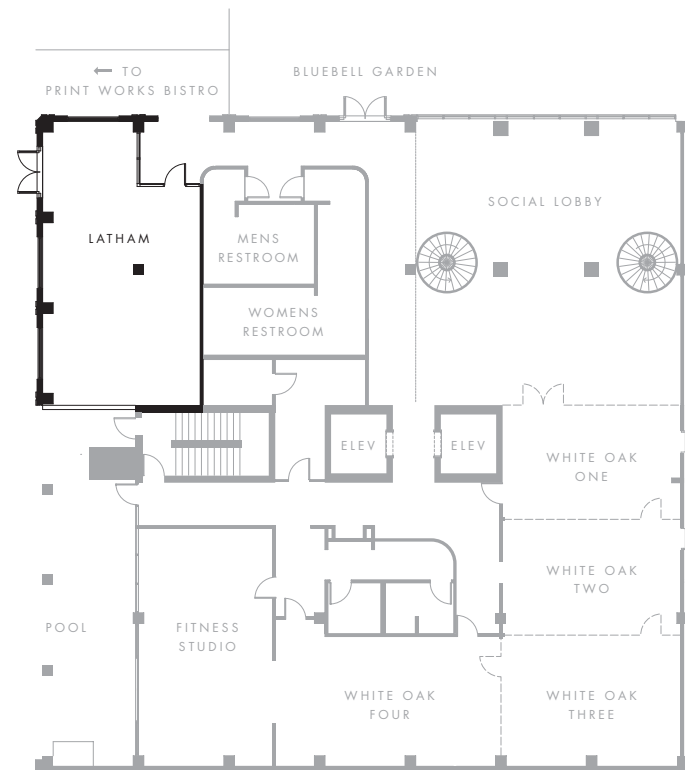
Meeting



Reception



PROXIMITY® HOTEL



LATHAM ROOM

The Latham Room is our smallest event room at 660 square feet and accommodates up to 40 for a reception and 36 for a sit-down dinner. Featuring high 12-foot ceilings and five nine-foot tall windows overlooking a lush garden, it is an airy and well-lit room. The Latham Room is equipped with a wall-mounted TV and audio visual capabilities. This intimate setting has it's own private entrance and is ideal for a business meeting, luncheon, social gathering or dinner.

	DIMENSIONS	SQ. FEET	CONVERTIBLE SEATING CAPACITIES					
			THEATRE	SCHOOLROOM	CONFERENCE	U-SHAPE	COCKTAIL	DINING
Latham Room	22' x 30'	660	25	14	18	14	40	36

CEILING: 12'





Cocktail



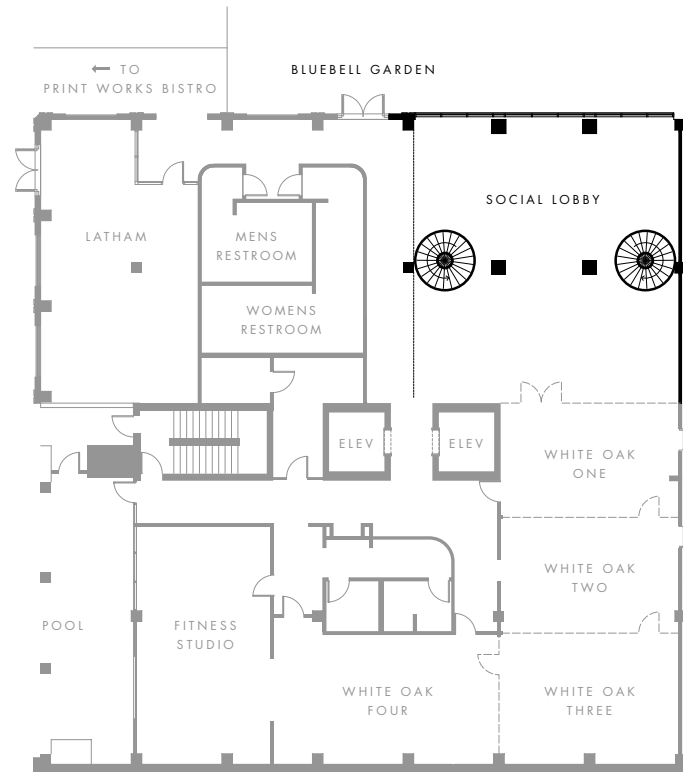
Theatre



Bluebell Garden



PROXIMITY® HOTEL



SOCIAL LOBBY AND BLUEBELL GARDEN

The stunning Social Lobby with its 22-foot high windows overlooks the Bluebell Garden. The lobby has the flexibility to be used with or without the lobby furniture. By removing the furniture, a grand space is created for events such as a wedding ceremony for up to 80 or reception up to 125. The Bluebell Garden is perfect for alfresco receptions and small ceremonies. Adjacent to the Social Lobby, the White Oak Room can be added for even more space and options.

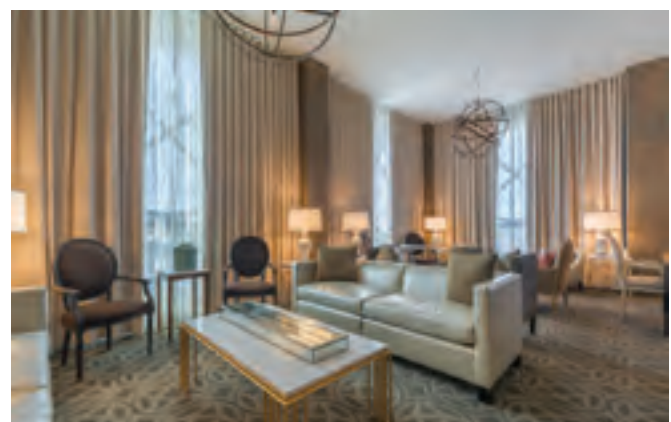
CEILING: 22'

	DIMENSIONS	SQ. FEET	CONVERTIBLE SEATING CAPACITIES					
			THEATRE	SCHOOLROOM	CONFERENCE	U-SHAPE	COCKTAIL	DINING
Social Lobby	N/A	1900	N/A	N/A	N/A	N/A	125	N/A
Bluebell Garden	N/A	1248	N/A	N/A	N/A	N/A	50	N/A





Loft Double Queen



City Suite



Loft King Center

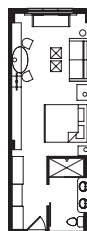


PROXIMITY® HOTEL

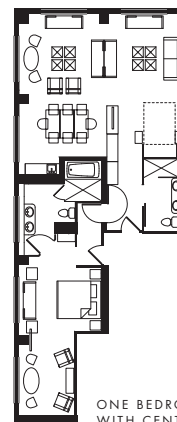
GUESTROOMS AND SUITES

- 147 loft-like guestrooms (including 10 suites)
- Abundant natural light from extra large operable windows
- Flat-screen television
- High-speed Internet access, wired and wireless
- Magi® Bed
- Dimmable lighting in bed and bathing rooms
- Bluetooth wireless stereo systems with speakers in the sleeping and bathing rooms
- Play content from your phone, tablet, or laptop on the TV
- Vanities with two sinks
- Aveda™ bath products
- Guest lounge “living room” on guestroom floors with comfortable seating and a computer
- Room service by Print Works Bistro
- Morning coffee in the Working Lobby
- Fitness studio and outdoor lap pool
- Sundries shop
- Coffee and Tea Brew Station featuring Counter Culture Coffee and Harney & Sons Teas
- Iron and ironing board
- Microwave and mini-refrigerator
- Makeup mirror and hair dryer
- Two Bathrobes
- Radio/alarm clock
- In-room safe
- Recycling in every room
- Original local artwork in each room
- Sandwich insulation for noise reduction
- Plenty of fresh air circulated into guestrooms
- Dry cleaning service
- Multi lingual staff
- Complimentary New York Times delivered upon request

LOFT KING

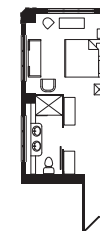


LOFT DOUBLE QUEEN



ONE BEDROOM CITY SUITE
WITH CENTER ROOM

CORNER ROOM



PRINT WORKS BISTRO





PROXIMITY® HOTEL

PRINT WORKS BISTRO

The Proximity Hotel is adjacent to Print Works Bistro and connected via an interior corridor. Fresh local ingredients create extraordinary flavors and creative comfort foods, traditional and modern versions of classic dishes popular in European-French Bistros. The beautiful dining room has walls of windows overlooking gardens. Outdoor dining is on the über cool Creekside Terrace. The wonderful wine list features 65 wines by the glass. The friendly, honest drinking bar has carefully crafted cocktails and small plates of spirited soulful food. Breakfast, lunch, dinner, and brunch menus are available through in-room dining. Print Works Bistro caters all events at the Proximity with the same high quality food and service that is found in the restaurant.

336.379.0699 | PRINTWORKSBISTRO.COM



LUCKY 32 SOUTHERN KITCHEN

Located less than a mile from the Proximity Hotel, with “Earnest food and hospitality in an upscale joint.” Menu items are prepared using the highest quality ingredients with plenty of local food to create interpretations of classic Southern dishes. Dine in the dining room, bar grill room, or outside on the covered Veranda. The wine and beer list features an impressive selection of craft beers and wines by the glass.

336.370.0707 | LUCKY32.COM



GREEN VALLEY GRILL

Located three blocks away, adjacent to the O.Henry Hotel. Informal elegant dining and seasonal menus use old-world European culinary sensibilities and Mediterranean flavors from locations such as the Tuscan area of Italy or the Provence region of France using locally sourced food. The friendly bar is sleek and stylish with a long wall of windows, curved granite bar and a variety of seating options. Enjoy outdoor dining in the Courtyard, an intimate, outdoor room, inspired by the hidden urban gardens found throughout Europe. The wine list receives the Wine Spectator Award of Excellence each year and features 75 wines by the glass.

336.854.2015 | GREENVALLEYGRILL.COM



GREEN VALLEY GRILL

LUCKY 32
SOUTHERN KITCHEN

